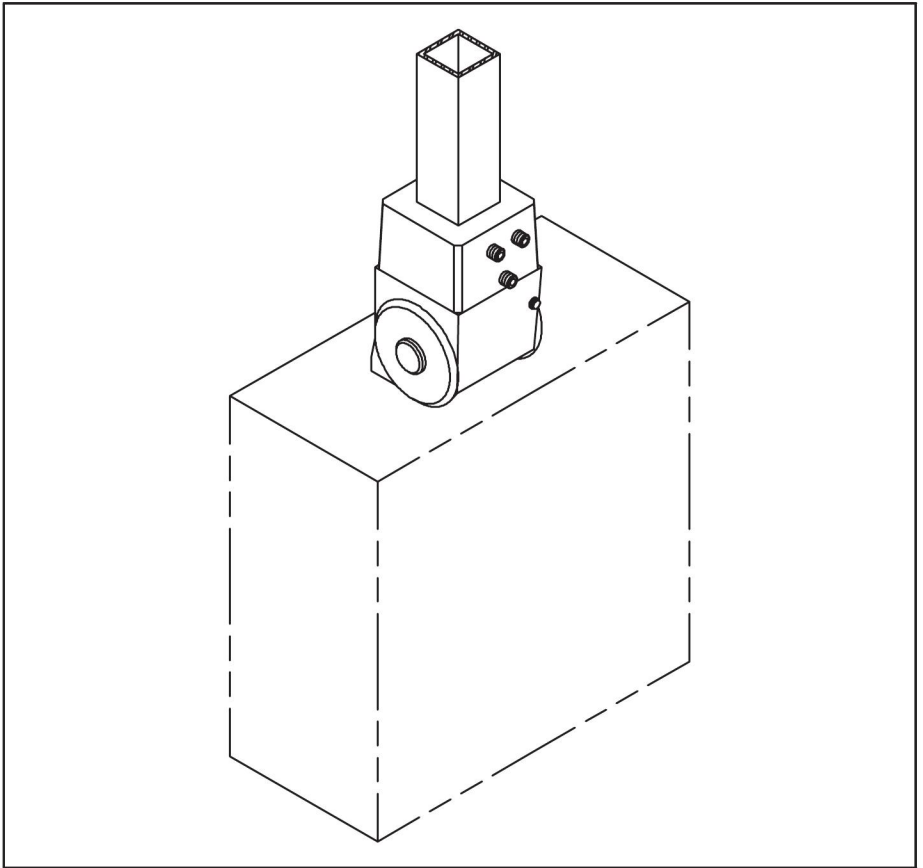




HOFFMAN

COMPACT®

Swivel Tilt
Drehneigungskupplung
Support pivotant d'inclinaison
Pivote giratorio



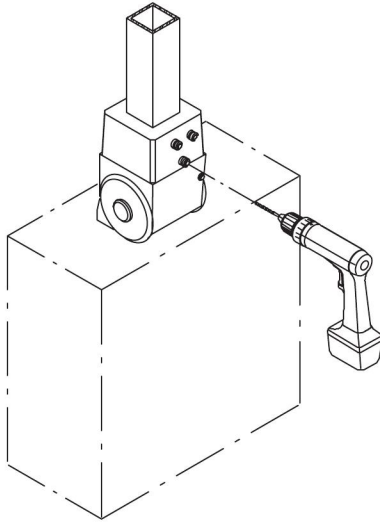
**⚠ WARNING
WARNUNG
AVERTISSEMENT
PRECAUCION**

To avoid personal injury and/or product damage, alternate set screw (item 4) is required when enclosure is mounted below joint fitting.

um Personenschäden und/oder Produkt zu vermeiden beschädigen Sie, wechselnde Klemmschraube (Position 4) wird angefordert, wenn Einschließung unterhalb der gemeinsamen Befestigung eingehangen wird.

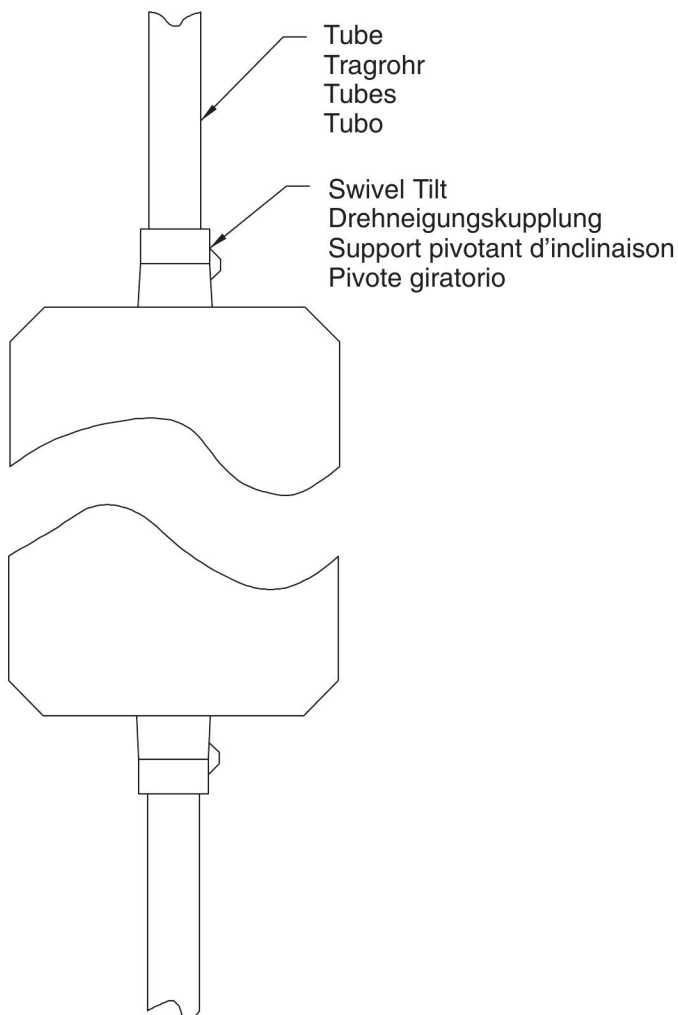
Pour éviter les blessures et/ou le produit endommagez, vis de réglage alternative (repère 4) est exigé quand la rubrique de description est montée au-dessous de l'ajustage de précision commun.

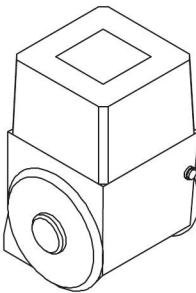
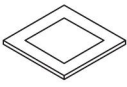


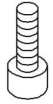

Para evitar daños corporales y/o el producto dañe, tornillo de presión alterno (número 4) cuando el recinto se monta debajo de la guarnición común.

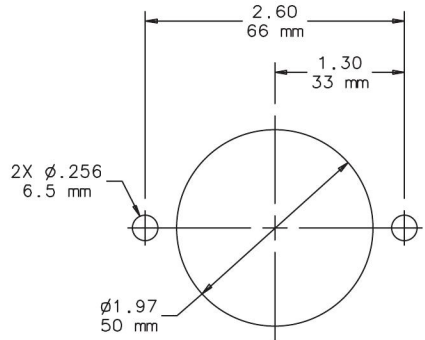
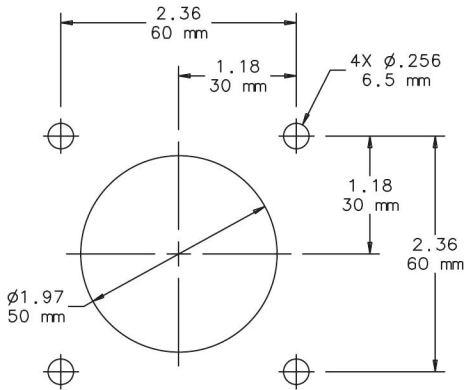


Mounting Options
Einbaumöglichkeiten
Accessoires de Montage
Opciones de Montaje

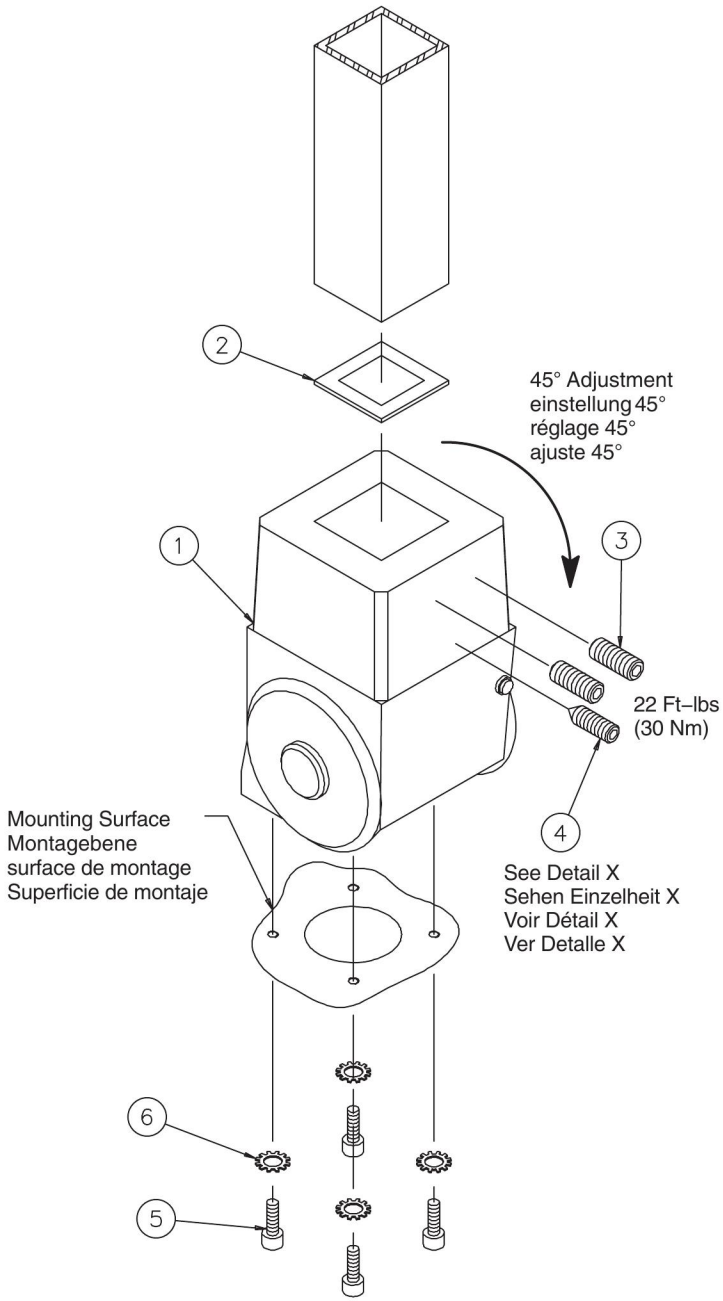
Countersink screw (item 4), see detail Y
Ansenkung Schrauben (position 4), sehen Einzelheit Y
Contre-s'effondrer Vis (repère 4), voir détail Y
Broca tornillo (número 4), ver detalle Y



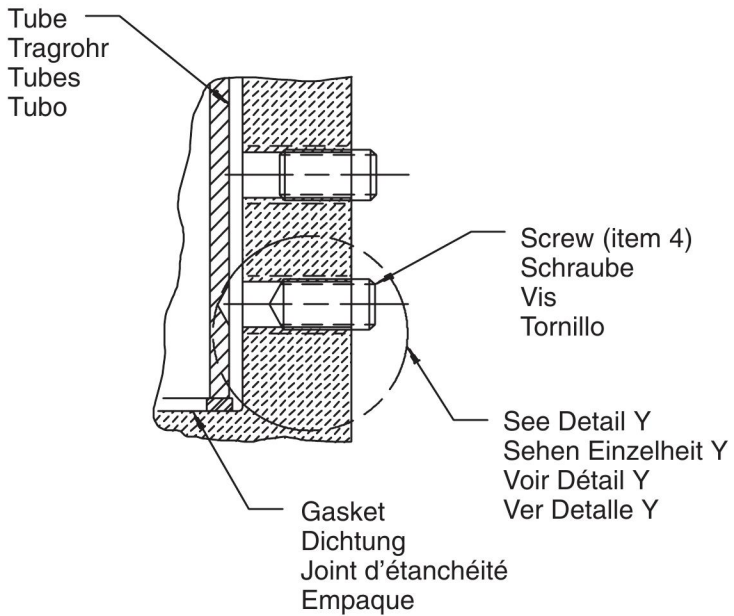
<p>1</p>  <p>(1x)</p>	<p>2</p>  <p>(1x)</p>	<p>3 M12</p>  <p>22 Ft-lbs (30 Nm)</p> <p>(2x)</p>	<p>4 M12</p>  <p>22 Ft-lbs (30 Nm)</p> <p>(1x)</p>
	<p>5 M6x12 M6x30</p>  <p>70 in-lbs (8 Nm)</p> <p>(4x)</p>	<p>6</p>  <p>(4x)</p>	



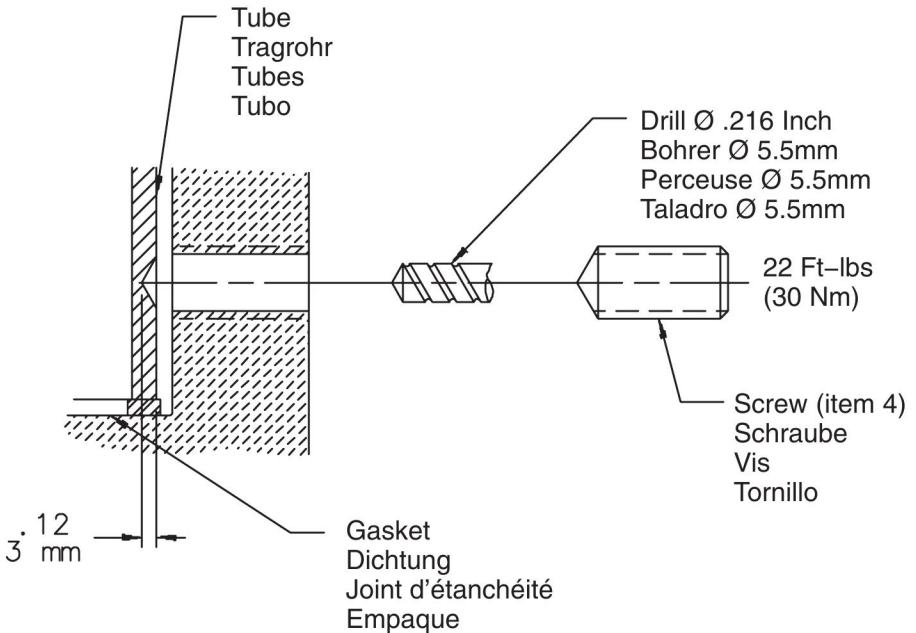
Mounting Hole
Montagebohrung
Trou de montage
Orificio de montaje



50/60/80



Detail X Einzelheit X Détail X Detalle X



Detail Y Einzelheit Y Détail Y Detalle Y



HOFFMAN





HOFFMAN



RSP Supply - 1-888-532-2706 - <https://www.RSPSupply.com>
See the product details here